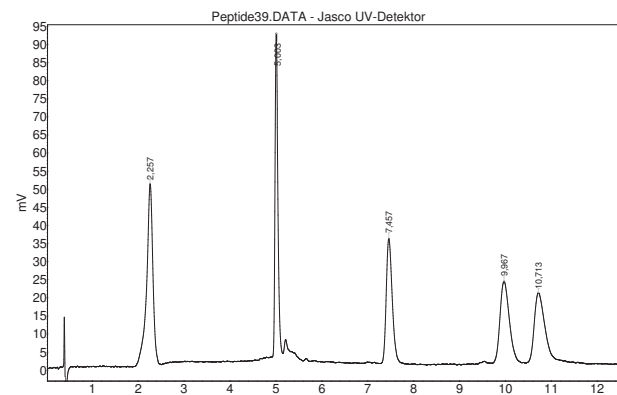


With over 60 years of experience in HPLC hardware we now present Ubersphere, our first ready-to-use HPLC column for a broad field of applications like proteomics, flavors & petrochemistry, food industry & health

- spherical high purity silica
- pore size 100Å
- surface of 330 m<sup>2</sup>/g
- coated with octadecyl bonding
- effective high endcapping



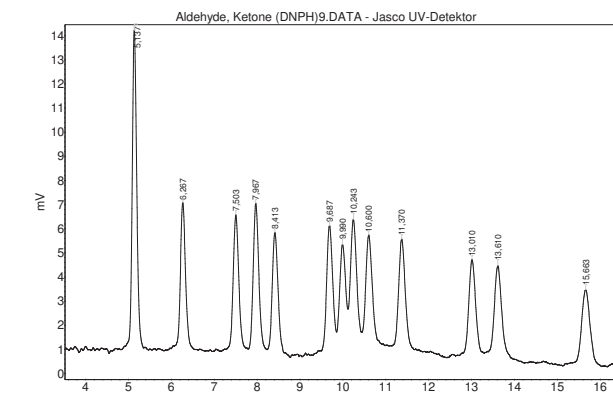
### Peptides



RT [min]	Name	Column	Uberspher C18, 5 µm
2,257	Gly-Tyr	Eluent A	Water [99,9]
5,003	Val-Tyr-Val	Eluent B	Acetonitril [0,1%]
7,457	Met enkephalin	Flow	2 ml/min
9,967	Leu enkephalin	Detection	UV 220 nm
10,713	Angiotensin II	Gradient:	0 min 10% 2 min 12% 5 min 36% 12 min 40% 13 min 45%
		Sample	10 µl
		Oven	30°C



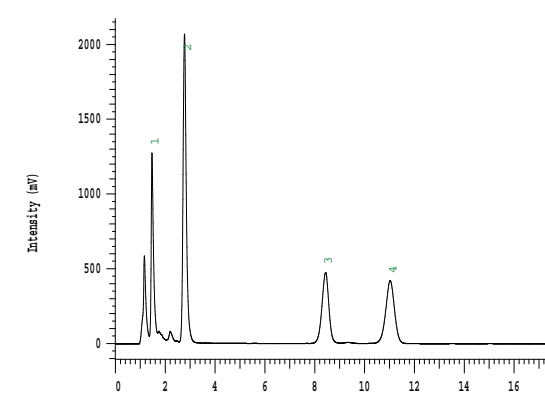
### Aldehydes/Ketons



RT [min]	Name	Column	C18 150 x 4,6mm
5,137	Formaldehyde	Eluent A	Acetonitril
6,267	Acetaldehyde	Eluent B	Water:THF (5:2)
7,503	Acetone	Flow	1,2 ml/min
7,967	Acrolein	Detection	UV 365 nm
8,413	Propionaldehyde	Gradient:	0 min: 70% 13 min: 40% 15 min: 40%
9,687	Crotonaldehyde	Sample	5 µl
9,99	Methyl ethyl ketone	Oven	25°C
10,243	Mathacrolein		
10,6	Butanal		
11,37	Benzaldehyde		
13,01	Pentanal		
13,61	p-Tolualdehyde		
15,663	Hexanal		



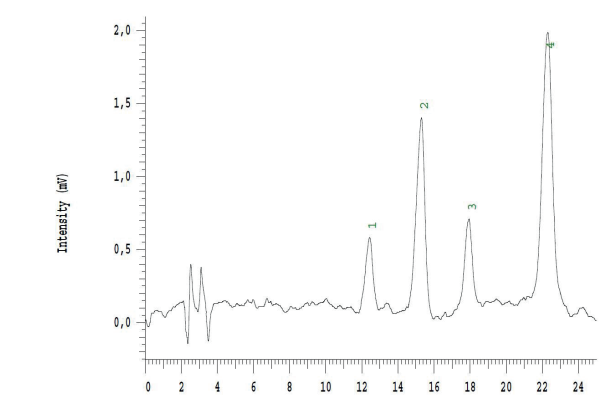
### Vitamins



RT [min]	Name	Column	Ubersphere C18 150 x 4,6mm
1,47	Vitamin K3	Eluent A	Water [2%]
2,78	Vitamin A1	Eluent B	Methanol [98%]
8,43	Vitamin D3	Flow	1,5 ml/min
11,03	Vitamin E	Detection	UV 280 nm
		Gradient:	0 min: 70% 13 min: 40% 15 min: 40%
		Sample	5 µl
		Oven	25°C



### Aflatoxins



RT [min]	Name	Column	ISAspher 100-5 C18, 250 x 4,6 mm
6,42	G2	Eluent A	Water [50%]
7,55	G1	Eluent B	Acetonitril [25%]
8,57	B2	Eluent B	Methanol [25%]
10,18	B1	Flow	1,3 ml/min
		Detection	UV 360 nm