



MöllerMedical

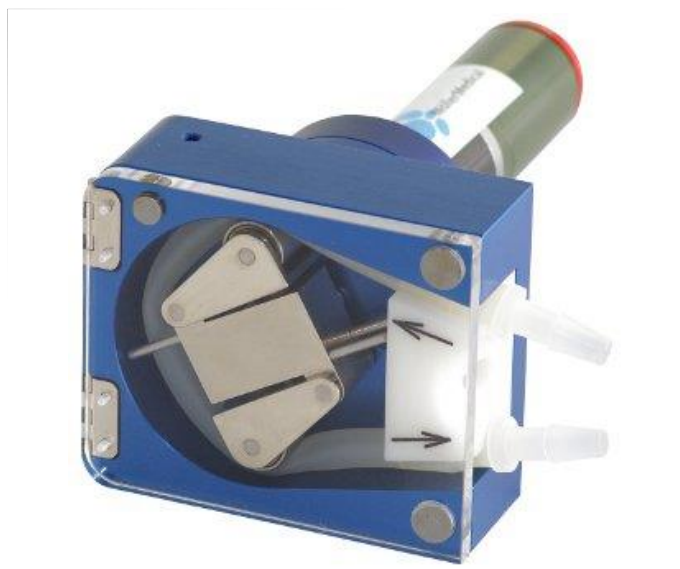
Möller Medical
Wasserkuppenstrasse 29-31
36043 Fulda

Tel +49 661 94195 0
Fax +49 661 94195 850

www.moeller-medical.com
info@moeller-medical.com

Schlauchpumpe zum Fördern und Dosieren
Peristaltic Pump for Handling and Dosing

SPQ 095



TECHNISCHE DATEN

| | |
|-------------------------|---|
| Förderrate | 125 – 575 ml/min |
| Drehzahl | 70 – 150 min ⁻¹ |
| Differenzdruck | 2,3 bar |
| Anzahl Rotorrollen | 2 Rollen |
| Antrieb | 24 VDC |
| Einsetzbare Schlauch ID | 4,0 – 6,0 mm |
| Schlauchmaterial | PVC, Silikon, weitere Schlauchmaterialien auf Anfrage |
| Material Gehäuse | Metall |
| Material Rotor | Metall |
| Abmessungen | 95 x 80 mm |

TECHNICAL DATA

| | |
|-----------------------|--|
| Flow Rate | 125 – 575 ml/min |
| RPM | 70 – 150 min ⁻¹ |
| Differential Pressure | 2.3 bar [35 psi] |
| No. of Rollers | 2 rollers |
| Drive | 24 VDC |
| Applicable Tube ID | 4.0 – 6.0 mm |
| Tube Material | PVC, Silicone, further material on request |
| Housing Material | Metal |
| Rotor Material | Metal |
| Dimension | 95 x 80 mm |

Where **Medicine**
meets **Engineering**